

North County Corridor - Phase 1 Project (Oakdale Road to Claus Road)

Purpose and Need

The Purpose of the project is to reduce existing and future traffic congestion in northern Stanislaus County, enhance traffic operations on SR-108, and support the efficient movement of goods as follows:

- Improve safety of BNSF rail crossing - with 12,000 daily passenger vehicle and bus trips and 46 passenger and freight trains crossing at this location, there have been numerous vehicle/train collisions that have resulted in 6 fatalities. This rail crossing is ranked #23 on the CPUC's Grade Separation Priority List.
- Improve east-west travel time reliability for the residents and businesses within Stanislaus County and the Cities of Modesto, Riverbank and Oakdale.
- Support the efficient movement of goods and services throughout the region to continue to support the regional economy. The present worth of the benefit/cost for freight alone nets \$156.2M.

Economic Competitiveness

- Stanislaus County produces almost 4 million tons of agricultural goods that translates into \$3.3 billion of agricultural income. Improving SR 108 will support the efficient movement of goods and spur the investment in the corridor.
- Constructing Segment 1 will provide much needed access to former U.S. Army Ammunition Plant in Riverbank and will spur economic investment in the redevelopment of the former Army facility.

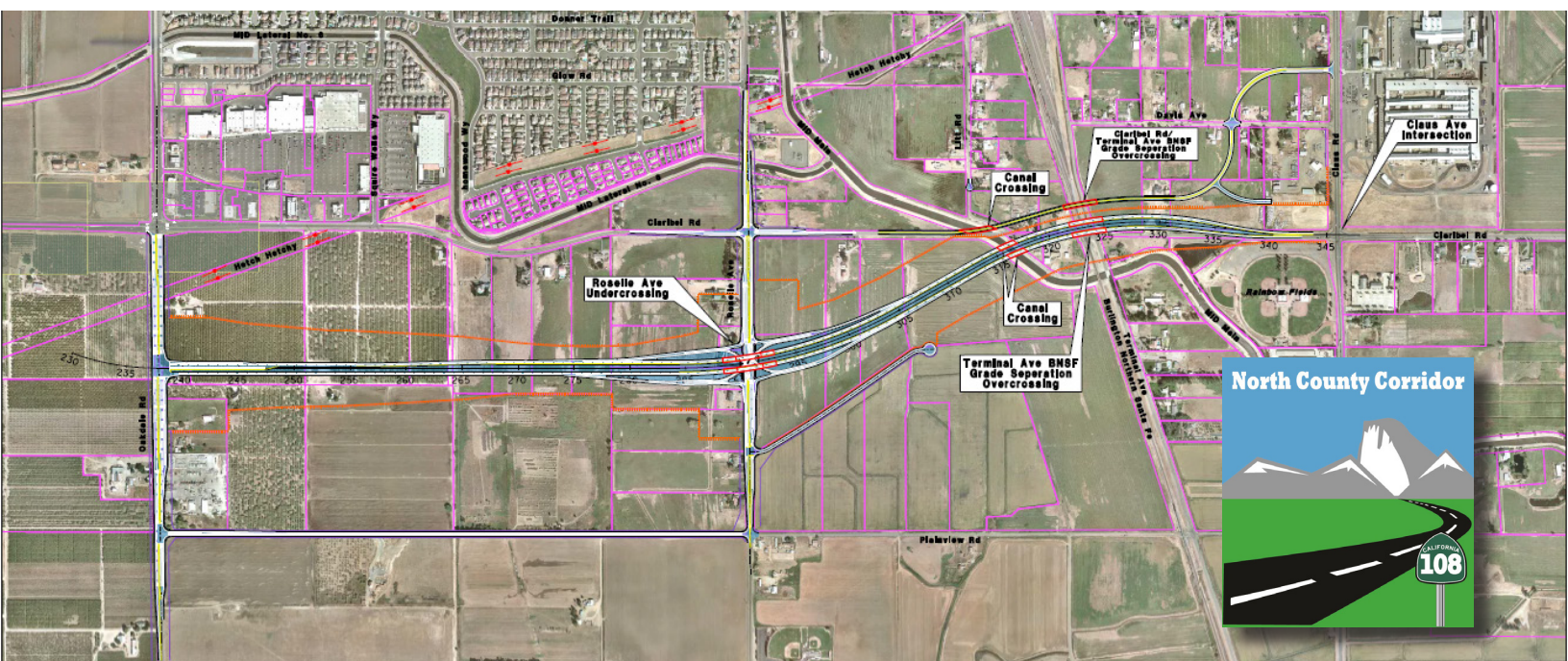
Project Readiness

National Environmental Policy Act compliance has been completed and the Record of Decision as signed on May 22, 2020.

Design: The agency has started the design component and has begun the right of way acquisition process as of Fall 2020.

Construction: With design and right of way acquisition to be completed in late 2022, Phase 1 Project will be "shovel ready" for the 2023 construction season.

Project Funding Plan Segment 1	Funding Amount	% of Total Cost	
Public Facilities Fee (PFF)	\$25M	17%	Local Funding (86%)
Measure L	\$99M	69%	
SB1 Grants			
ITIP (State Only)			
US DOT BUILD Grant	\$20M	14%	Federal Funding (14%)



North County Corridor - Phase 1 Project (Oakdale Road to Claus Road)

Requesting Your (Continued) Support

A \$20M USDOT BUILD grant has been obtained to acquire right of way for the Phase 1 Project. A \$20M SB-1 TCEP grant has been obtained to fund the construction effort for the Phase 1 Project. In order to continue the project momentum, we are requesting your continued support for additional SB1 and ITIP funding opportunities to construct this first segment of the North County Corridor.

Background

Stanislaus County is located approximately 60 miles east of the San Francisco Bay Area in the heart of the San Joaquin Valley. World famous for its rich agricultural heritage, the San Joaquin Valley produces the vast majority of agriculture in California, and is responsible for 13% of the nation's agricultural production. With a population of over 525,000 people, Stanislaus County has an economy that is based primarily on agriculture. Improving State Route 108 (North County Corridor) is essential for moving agricultural goods which are the lifeblood of the economy of Stanislaus County.



Enhance Economic Competitiveness

The ultimate North County Corridor (new SR-108) will provide a greatly enhanced route for commercial truck traffic to access State Route 99 as well as tourists visiting Yosemite National Park. The new freeway/expressway will reduce delay and increase efficiency, which translates to an economic benefit for businesses in Stanislaus County who truck their products to SR-99 for distribution across the United States and abroad. Caltrans and Stanislaus County have invested \$110 million for corridor improvements from SR-99 to Coffee Road, and the Phase 1 Project will build on these investments.

Partnerships

Strong partnerships are the cornerstone of the delivery strategy for the SR-108 (North County Corridor) project. Stanislaus County, StanCOG, the Cities of Modesto, Riverbank and Oakdale and Caltrans formed a Joint Power Authority in 2007 to deliver the Project Approval and Environmental Documentation for the North County Corridor project and successfully completed their mission with approvals of the Feasibility Study, Route Adoption Report, EIR/EIS, Record of Decision and Project Approval.

Self Help County

In 2016, Stanislaus County voters passed Measure L, a local sales tax for transportation projects by a record-breaking 71 percent! This new sales tax not only funds a portion of the North County Corridor project, but also shows how committed Stanislaus County is to being a Self-Help County.

